



# Bezdrátové spoje nové generace

Bc. Roman Štemberk, DiS.

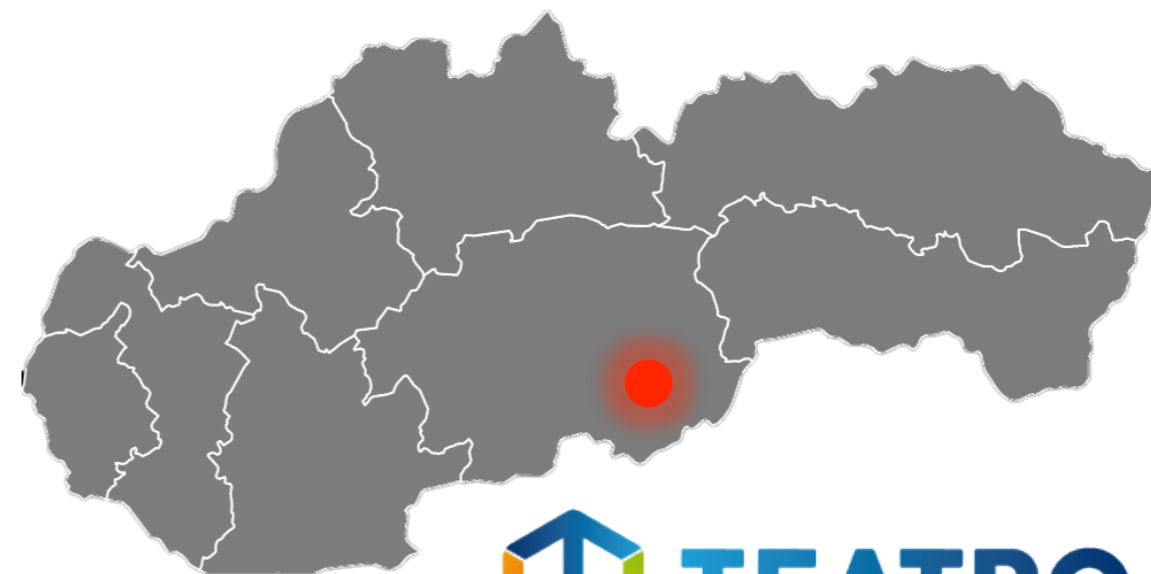
12.10.2017

# Reference RS NET

- Modernizace přístupových switchů
- Původní switche 100Mbit s 1G uplinkem
- Nové 1Gbit s 10G uplinkem

ECS4120-28T

415 switchů





LigoWave

**PROFICOMMS**  
value added distributor

2007

LigoWave

---

Tréninky

Litva

Litva a Taiwan

Čína

100 zemí

WISP, Operátoři



Enterprise



Průmysl



Bezpečnost

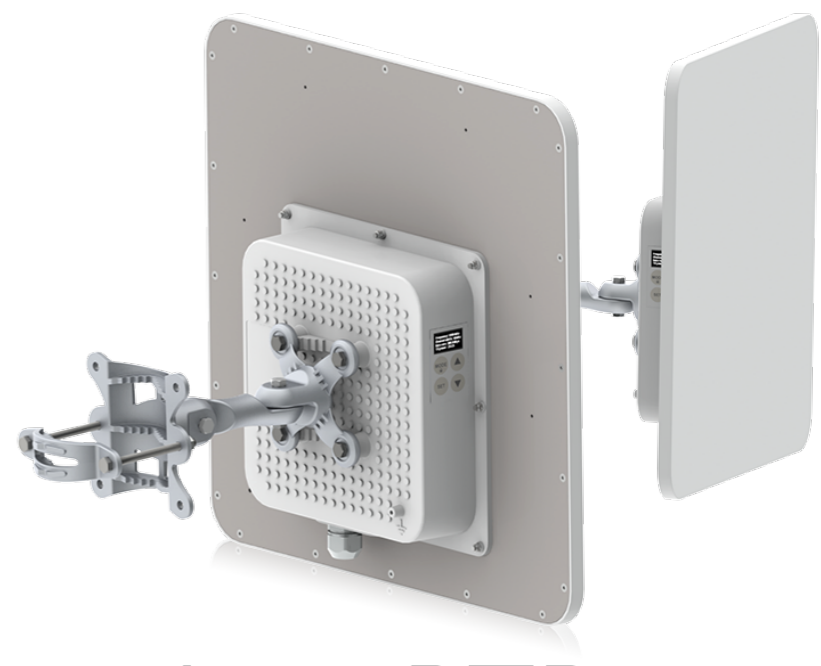




LigoDLB



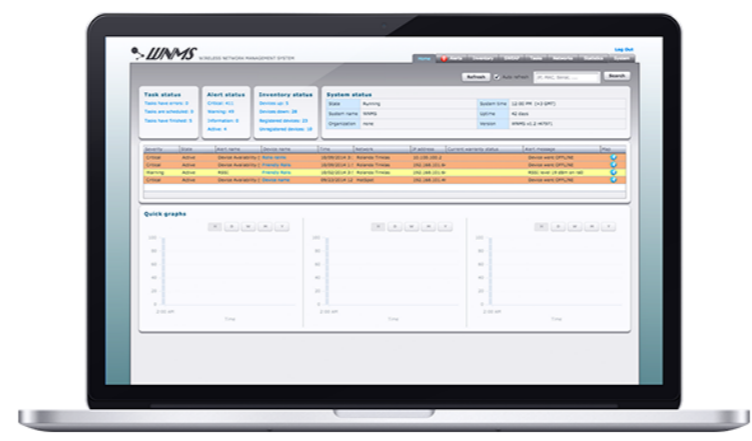
LigoPTMP



LigoPTP



Infinity



Software



Příslušenství



LigoDLB



LigoPTMP



LigoPTP



2 a 5 GHz pásmo



Provedení IP66 a vyšší



-40 to +65 C a vyšší



Integrovaná ochrana proti přepětí až 6kV



Široké portfolio



Dual FW image

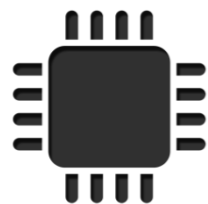


Kompatibilita (802.11N)



iPoll3

- 180Mbps a 60k PPS
- Zarušené prostředí
- Kontrola síly signálu
- Triple play

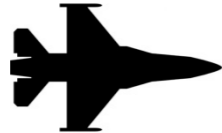


Profesionální HW



LigoPTMP

LigoPTP



W-JET



Vyšší zabezpečení

**GORE-TEX®**

Goretexová membrána



2,4GHz management



PoE pass through





# Software





# WNMS

- Snadná konfigurace a management jednotek
- Zdarma
- Provedení Software, Cloud a Mobilní aplikace

The screenshot displays the WNMS web interface and two mobile applications. The web interface shows a table of statistic definitions and a configuration form for a specific definition.

Statistics definition name	SNMP OID
PTP MIMO Signal level	.1.3.6.1.4.1.32750.3.5.1.2.1.1.14.\$(ra0)
PTP MIMO Noise level	.1.3.6.1.4.1.32750.3.5.1.2.1.1.15.\$(ra0)
Uptime	.1.3.6.1.2.1.1.3.0
PTP MIMO Frequency	.1.3.6.1.4.1.32750.3.5.1.2.1.1.7.\$(ra0)
CPU load	.1.3.6.1.4.1.2021.10.1.6.1
PTP MIMO Connected radio peers	.1.3.6.1.4.1.32750.3.5.1.2.1.1.16.\$(ra0)
SNMP-Engine-Boots	.1.3.6.1.6.3.10.2.1.2.0
Free memory	.1.3.6.1.4.1.2021.4.11.0
Input bytes (ethernet/eth0)	.1.3.6.1.2.1.2.2.1.10.\$(eth0)
Output bytes (ethernet/eth0)	.1.3.6.1.2.1.2.2.1.16.\$(eth0)
PTP MIMO TX retries	.1.3.6.1.4.1.32750.3.8.1.3.1.1.17.\$(ra0).0
PTP MIMO RX drops	.1.3.6.1.4.1.32750.3.8.1.3.1.1.37.\$(ra0).0
PTP Signal level	.1.3.6.1.4.1.32750.3.5.1.2.1.1.14.4
PTP Noise level	.1.3.6.1.4.1.32750.3.5.1.2.1.1.15.4
PTP Frequency	.1.3.6.1.4.1.32750.3.5.1.2.1.1.7.4
PTP Connected radio peers	.1.3.6.1.4.1.32750.3.5.1.2.1.1.16.4
PTP TX retries	.1.3.6.1.4.1.32750.3.6.1.3.1.1.24.4.0
PTP RX drops	.1.3.6.1.4.1.32750.3.6.1.3.1.1.18.4.0

**Statistics definition details**

Statistics definition name: DLB-APC-Dot11IfBitRate.3  
SNMP OID: .1.3.6.1.4.1.32761.3.5.1.2.1.1.11.3  
Graph title: Data rate  
Y axis type: Linear  
Y axis label: Visible Mbps  
Use delta:  Enabled  
Auto scale Y axis:  Enabled  
Lower limit:

**Alert / Warranty Expired**

**ALERT** **CRITICAL**

Time: 2013-08-07 14:31:34  
Name: Warranty Expired  
State: active  
Message: Warranty expired

**INVENTORY**

Inventory: APM Main Site to Warehouse  
Inventory IP: 192.168.1.221  
Network: APM Supplies  
Warranty: expired

**MAP**

Inventory map showing locations in the United Kingdom.



# LinkCalc

- Zdarma
- Online
- PDF reporty
- Geografická data

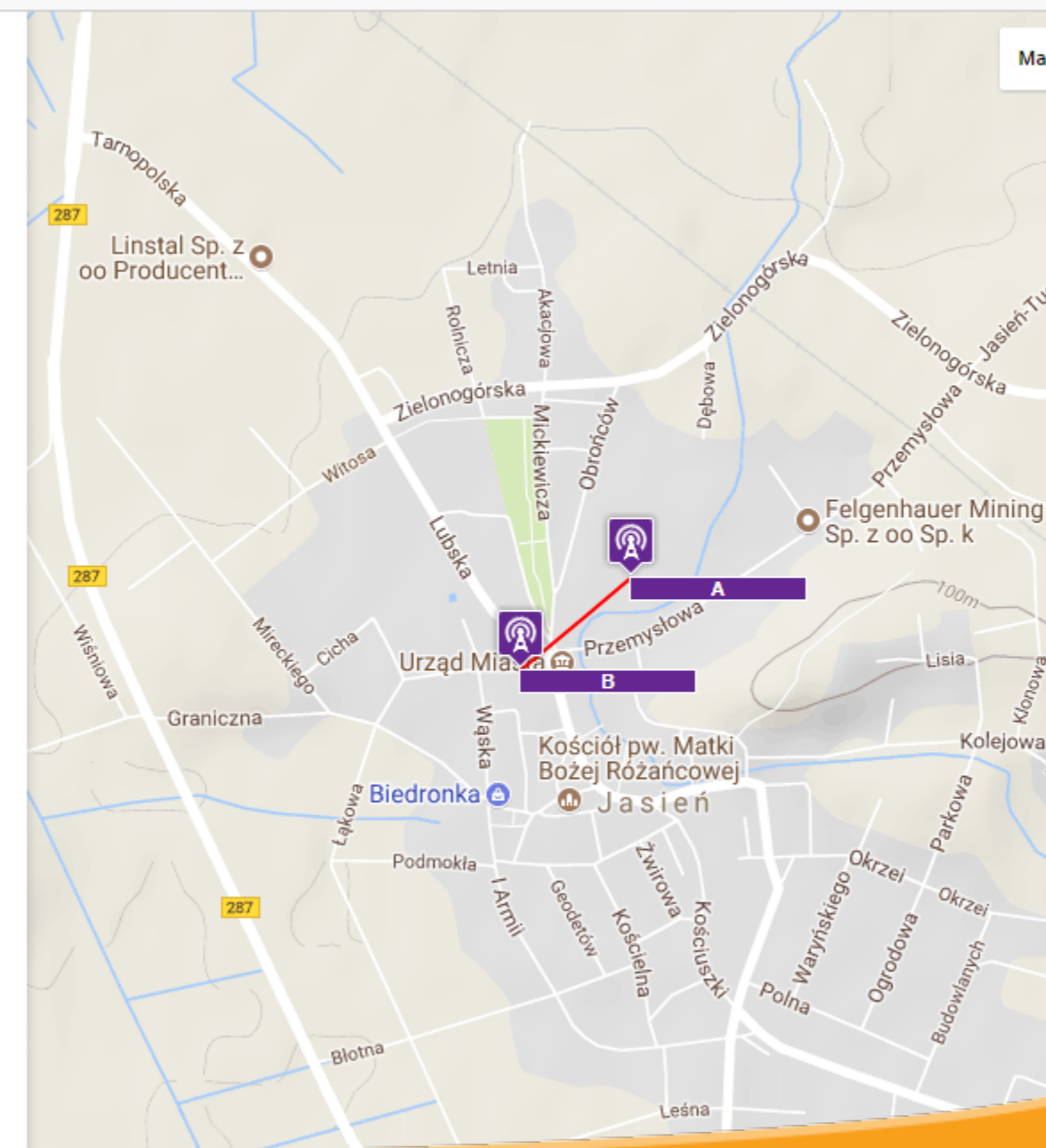
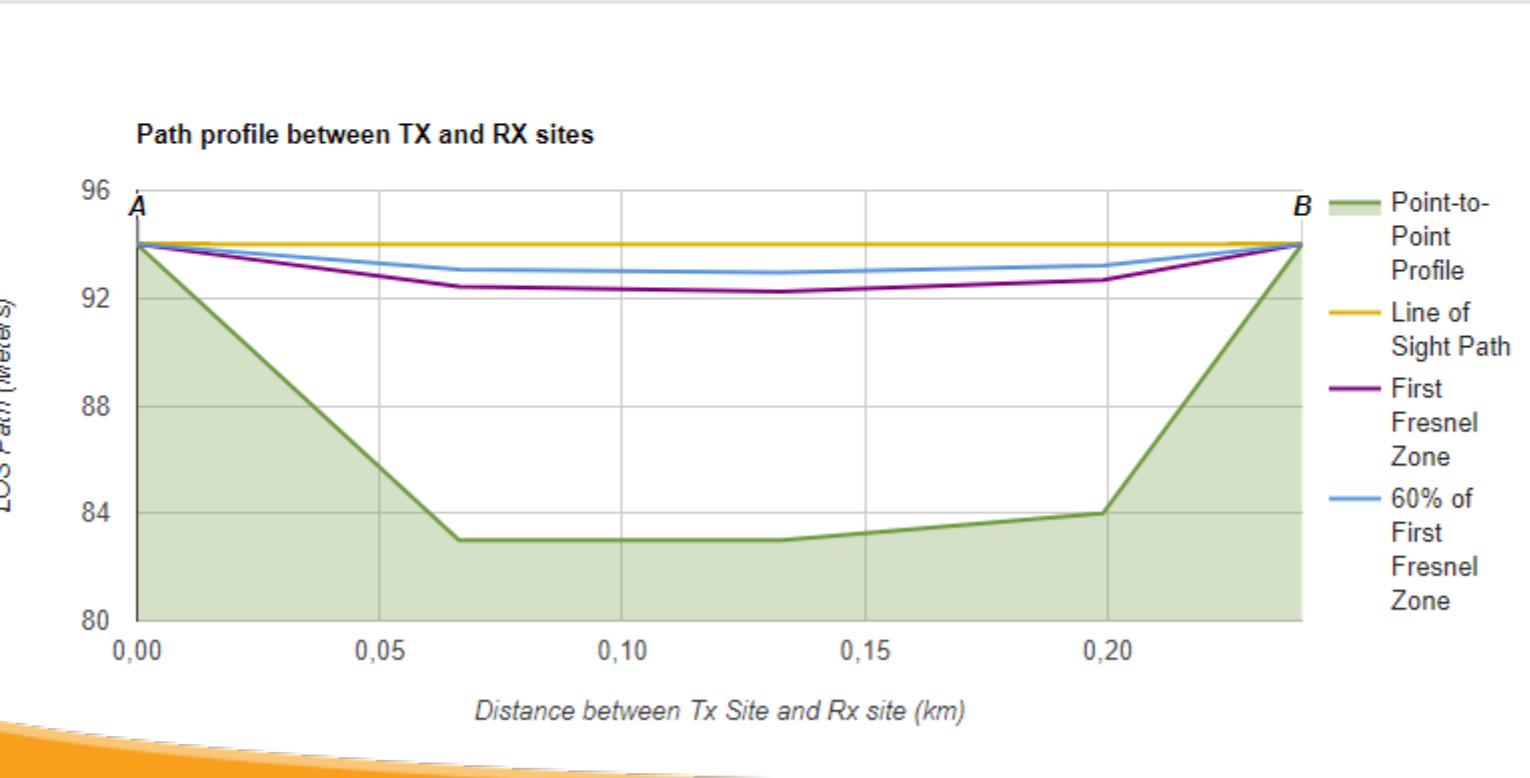
LinkCalc [Contact](#) [Quick Links](#) ▼ stemberk@profic

Total Path loss	90	dB	Thermal fade margin	80	dB
Level at the RX site	-16.17	dBm	Distance between sites	0.24	km
EIRP	51.00	dBm	Link availability due to rain	n/a	🔍

Share Link 🔗 [Public Link](#) [Private Link](#) [Create Report \(PDF\)](#) [Save Record](#)

Expected bidirectional throughput in a noise free link: 👁

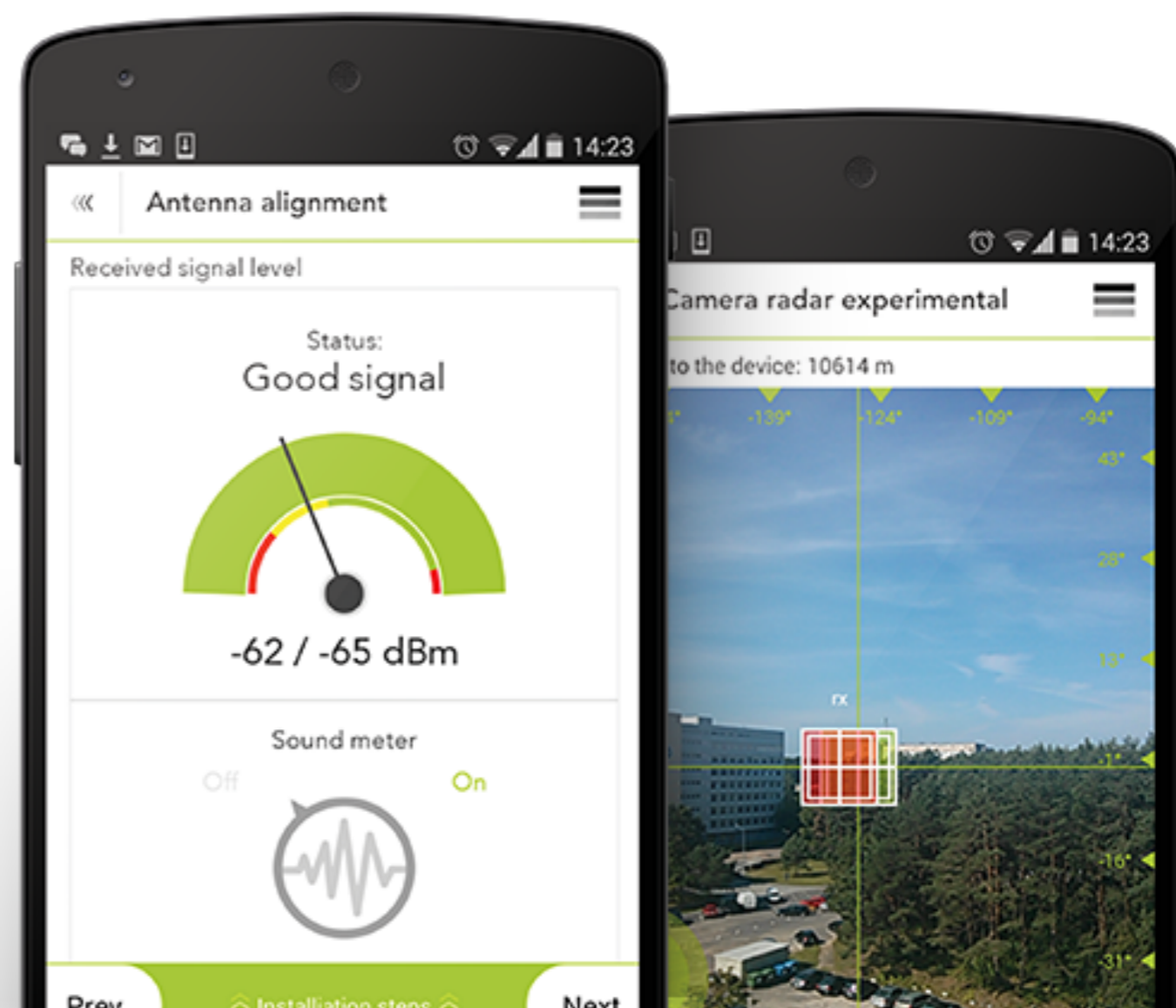
[Click here to request a quote for this link?](#) ✉





# Installer APP

- Zdarma
- WNMS, LinkCalc, Google Earth
- Hledání zařízení na mapě
- Test propustnosti
- Síla signálu





LigoWave

# DEMO PROGRAM

---

- [stemberk@proficomms.cz](mailto:stemberk@proficomms.cz)
- +420 736 625 838

 **PROFICOMMS**  
value added distributor